



Agenda Urbana Europea Partenariato sull'Adattamento al Cambiamento Climatico

Adattamento: strategia di resilienza Il Percorso del Comune di Genova

IL PIANO DI ADATTAMENTO AL CAMBIAMENTO CLIMATICO
COME STRUMENTO DI GOVERNANCE LOCALE",

Savona - 17th October 2018

Comune di Genova (Coordinatore) Stefania Manca



Agenda Urbana EU - 12 Temi Prioritari + 2 New



INCLUSION OF
MIGRANTS & REFUGEES



DIGITAL
TRANSITION



CLIMATE
ADAPTATION



HOUSING



URBAN
MOBILITY



PUBLIC
PROCUREMENT



AIR QUALITY



CIRCULAR
ECONOMY



ENERGY
TRANSITION



URBAN POVERTY



JOB & SKILLS IN
LOCAL ECONOMY



SUSTAINABLE USE
OF LAND AND
NATURE-BASED
SOLUTIONS



BETTER REGULATION

BETTER FUNDING

BETTER KNOWLEDGE

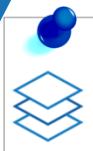
OBJECTIVES

Nuovi partneriati:
URBAN SECURITY
CULTURAL HERITAGE

**Finalità: Elaborare
un Piano di Azione
a livello Europeo**



Agenda Urbana – Principi chiave



MULTI-LEVEL GOVERNANCE

Each Partnership is composed by Local Authorities, Member States and representative of European Commission.



PARTNERSHIP WORKING METHOD

Urban Agenda Priority Themes are tackled by engagement in twelve different Partnership.



INTEGRATED APPROACH

Focus on all major aspects of urban development: economy, environment, social, territory and culture, to ensure a sound urban governance and policy.



SUSTAINABLE URBAN DEVELOPMENT

Link with the seventeen Sustainable Development Goals of the UN.



UNITED NATIONS GOALS

Link with the New Urban Agenda (Habitat III) of the UN and the Climate Change Paris Agreement of the UNFCCC.



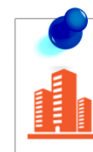
FUNCTIONAL URBAN AREAS

The nature of Urban challenges are local but require wider territorial solutions and cooperation within their functional areas and with their surrounding regions.



URBAN-RURAL LINKAGES

Complexity of urban challenge requires governance across administrative boundaries: urban-rural, urban-urban and cross-border cooperation.



CITIES OF ALL SIZE

Urban Agenda for the EU acknowledge the importance of Urban Areas of all size.



Partenariato sull'Adattamento al Cambiamento Climatico

what?

The Partnership on Climate Adaptation aims to find the best way to translate the needs of cities into concrete action through proposals of better regulation, funding and knowledge exchange, to achieve a common awareness level of the criticality of climate change, to develop progressively city capacities to address the impacts of such change.

The Partnership on Climate Adaptation, coordinated by the City of Genoa, includes six local authorities - the Province of Barcelona and the Cities of Glasgow, Trondheim, Potenza, Loulè and Sfantu Gheorghe, four Member States - France, Poland, Hungary and Bulgaria - and the Directorates-General of the European Commission - REGIO, CLIMA, ENV, RTD, ECHO. Other european organizations are EuroCities, CERM-Council of European Regions and Municipalities, EIB-BEI European Investment Bank, and URBACT.

who?

why?

Vulnerability assessments, climate resilience and risk management are needed to anticipate the adverse effects of climate change and take appropriate action to prevent or minimise the damages they could cause to Urban Areas, such as human deaths and injuries, permanently or temporarily displaced people, properties, infrastructures, services, ecosystem services, agricultural systems, psychological well-being and safety perception, financial or economic loss.

The Partnership, through thematic working groups activities, will define an Action Plan where every action chosen to be implemented in urban areas will be assessed in an Adaptation Policy Cycle. It will consist in four main phases (Assessing Risk and Vulnerability to Climate Change, Select and Planning Adaptation Actions, Implementing Adaptation Actions, Monitoring and Evaluation), with the multilevel governance support and participation

how?





Partenariato sull'Adattamento al Cambiamento Climatico

Composizione

Stati Membri	Authority Locali	Commission Europea	Altre Organizzazioni
FRANCE	GENOVA (IT) - Coordinatore	DG REGIO	EUROCITIES
POLAND	BARCELONA Diput. (ES)	DG CLIMA	CEMR
HUNGARY	GLASGOW (UK)	DG ENV	EIB
BULGARIA	TRONDHEIM (NO)	DG RTD	URBACT
	LOULÈ (PT)		
	POTENZA (IT)		
	SFANTU GHEORGHE (RO)		

Stakeholder/altri partner:
EEA, JRC, CoMo, MUNICH RE, ESPON

“to anticipate the adverse effects of climate change and take appropriate action to prevent or minimise the damage it can cause to Urban Areas. The focus will be on: vulnerability assessments, climate resilience and risk management (including the social dimension of climate adaptation strategies).”



“

Come dialogare e lavorare con un argomento così ampio come l'Adattamento al Cambiamento Climatico?



In maniera circolare, partendo dai sistemi globali, scalando le analisi fino a livello locale e presentando proposte valide a livello globale.

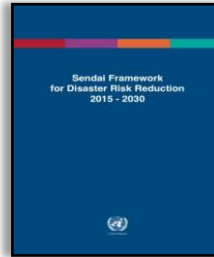
”

Base di lavoro

CLIMATE CHANGE 2014 IMPACT, ADAPTATION AND VULNERABILITY IPCC 2014



PARIS AGREEMENT UNFCCC 2015



SENDI FRAMEWORK FOR DISASTER RISK REDUCTION UNISDR 2015



NEW URBAN AGENDA HABITAT III



HABITAT III HOUSING AND SUSTAINABLE URBAN DEVELOPMENT UN GA 2016

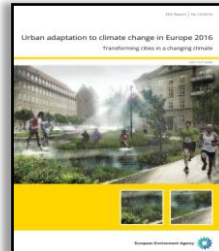


MANAGING THE RISKS OF EXTREME EVENTS AND DISASTERS TO ADVANCE CLIMATE CHANGE ADAPTATION IPCC 2012

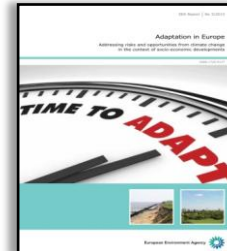
GLOBAL WARMING OF 1.5 °C STRENGTHENING THE GLOBAL RESPONSE TO THE THREAT OF CLIMATE CHANGE, SUSTAINABLE DEVELOPMENT IPCC 2018



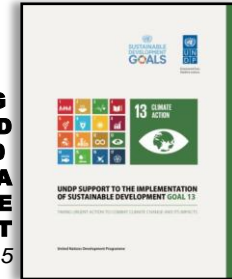
URBAN ADAPTATION IN CLIMATE CHANGE IN EUROPE 2016 EEA 2017



ADAPTATION IN EUROPE 2016 EEA 2013



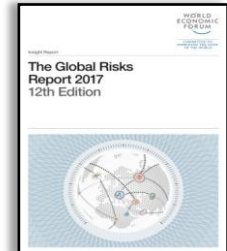
TRANSFORMING OUR WORLD THE 2030 AGENDA FOR SUSTAINABLE DEVELOPMENT UN GA 2015



CLIMATE CHANGE IMPACT AND VULNERABILITY IN EUROPE 2016 EEA 2017

ADAPTATION IN EUROPE 2016 EEA 2013

THE GLOBAL RISK WEF 2017





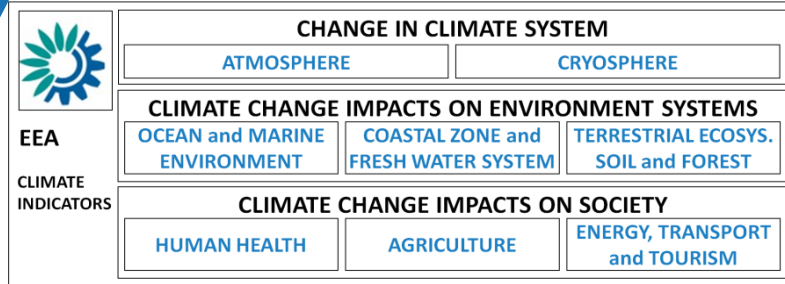
Timeline per elaborare il Piano di Azione



Fase di Implementazione – inizio gennaio 2019



FRAMEWORK di analisi

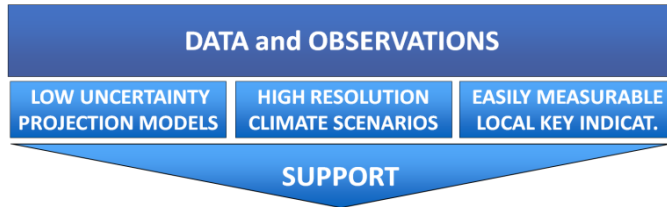


EEA
CLIMATE INDICATORS



Partnership expectation:

- to translate the needs of Cities, Member States and EU Commission Organizations in a **common awareness level** of the criticality of climate change and related impacts in urban areas;
- to establish a progressive enabler path, from basic to enhanced stage, to **increase cities and people capacities** in risks management



	GOVERNANCE and PLANNING	RISK KNOWLEDGE and ASSESSMENT	RESOURCES and FUNDING
BASIC STAGE	EXPERIENCED STAFF	EXPERTISE and TOOLS	R&I STAKEHOLDER ENGAGEMENT
INTERMED. STAGE	INTEGRATED STRATEGIC PLANNING	RISK ASSESSMENT METHODOLOGY	COSTS/BENEFITS ANALYSIS
ENHANCED STAGE	DECISION-MAKING CRITERIA	VULNERABILITIES ANALYSIS	MONETIZING ADAPTATION

MANAGE

CLIMATE-RELATED RISKS IN URBAN AREAS			
FLOOD HEAVY RAIN	WINDSTORM STORMSURGE	LANDSLIDE DEBRIS FLOW	HEAT WAVE URBAN HEAT ISL.
WATER AVAILABILITY	AIR QUALITY	SEA RISE COASTAL EROSION	FOREST FIRE INTERFACE FIRE
DISEASE PANDEMIC	ENERGY CONSUMPTION	BIODIVERSITY LOSS	DROUGHT



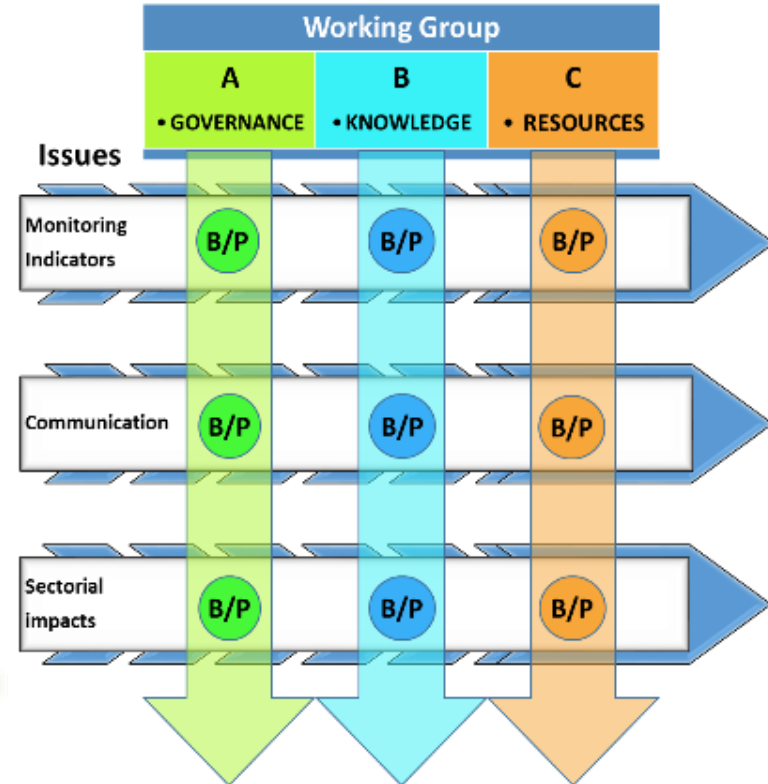
PERCORSO DI LAVORO per definire le azioni

3 Gruppi di Lavoro

3 TEMATICHE verticali

3 Fattori abilitanti orizzontali

Attraverso una cross analysis





RISULTATI cross analysis: barriere e potenzialità

	GOVERNANCE	KNOWLEDGE	RESOURCES	TOTAL
BOTTLENECKS	10	7	22	39
POTENTIALS	5	7	6	18

Top 8 Bottlenecks

Working group	Bottleneck
Governance	Climate change adaptation is only in the mandate of city environmental departments
	Too many tools and templates exist on adaptation to climate change, making it difficult for cities to find their way
	The different time horizons of political cycles and climate adaptation policies
Knowledge	Barriers to obtaining needed data
	The communication used to 'spread the word' about climate adaptation policies aren't suited to their target audience
Resources	Conflicting budget priorities within local authorities
	Insufficient resources and time/scale to finance projects
	Lack of capabilities and resources within Local Authorities to draft SECAPs



PIANO D'AZIONE - 11 AZIONI PROPOSTE

Better Regulation

- **R1.** Analisi degli strumenti di sviluppo urbano multilivello e di pianificazione, in funzione delle azioni di adattamento climatico nazionale, regionale e locale

Better Funding

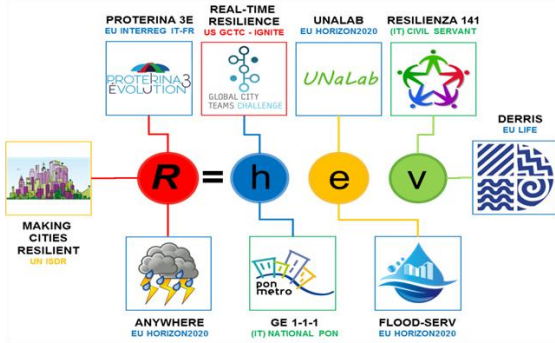
- **F1.** Redazione di linee guida e toolkit per l'analisi economica dei progetti di adattamento
- **F2.** Raccomandazioni per i Piani Operativi del FESR al fine di migliorarne l'accesso ai comuni
- **F3.** Dedicare una linea per i progetti di adattamento urbano nel programma LIFE
- **F4.** Fornire ulteriore supporto per la stesura di piani di adattamento locali

Better Knowledge

- **K1.** Miglioramento dell'accessibilità dei dati della piattaforma COPERNICUS per i comuni dell'UE
- **K2.** migliorare il contenuto dedicato alle aree urbane della piattaforma europea Climate-ADAPT con traduzioni in lingua locale
- **K3.** istituire un'accademia di formazione politica (training) sull'adattamento climatico
- **K4.** rafforzare il coinvolgimento dei cittadini e delle parti interessate per istituire agende di adattamento climatico a livello regionale e locale
- **K5.** promuovere l'accesso aperto ai dati assicurativi per la gestione del rischio derivante dagli impatti del cambiamento climatico
- **K6.** garantire un'ulteriore coinvolgimento delle associazioni municipali nazionali e del Patto dei Sindaci come principali facilitatori e sostenitori delle autorità locali

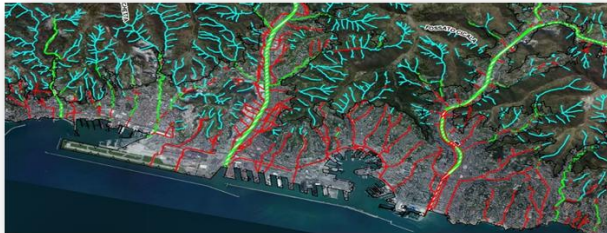


Municipalità di Genova: Percorso circolare per definire una strategia



INIZIATIVE & PARTNERSHIPS

CONSAPEVOLEZZA



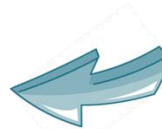
UPSCALE....
APPROCCIO
SISTEMICO PER
UN PIANO
D'AZIONE EU



GENOVA COORDINATORE
PARTENARIATO ADATTAMENTO AL
CAMBIAMENTO CLIMATICO
AGENDA URBANA EUROPEA



METODOLOGIA
PER UNA
STRATEGIA
LOCALE?





Background



Necessità

Definire una strategia di sistema condivisa e inclusiva

stabilire priorità e strumenti per prevenire e limitare danni

potenziare il tessuto urbano, economico e sociale di città

Genova@Resiliente...



Iniziativa chiave di sviluppo sostenibile e innovativo del territorio



Start: 20 novembre 2018



STRATEGIA GENOVA@RESILIENTE



ASSET



Sviluppo Innovativo delle
Infrastrutture, reti e
Comunicazioni

- Mappatura
- Condizioni
- Monitoraggio
- Progettazione innovativa

Locali - Nazionali



Cambiamenti Climatici
Rigenerazione Urbana

- Adattamento
- Prevenzione
- Sviluppo sostenibile
- Agenda Urbana Locale
- SECAP (Sustainable Energy & Climate Action Plan)

Nazionali - Internazionali



Impatti Economici
Community/Imprese

- (Analisi) Vulnerabilità
- (Analisi) costi/benefici
- Tool di informazione/ fruizione
- Community resiliente
- Welfare e misure correlate
- Pianificazione integrata
- Azioni per tessuto socio-economico
- Resilienza Organizzativa

Locali - Nazionali - Internazionali

Elementi
Analisi problematiche
Classificazione **Priorità**

Temi
Bisogni
Soluzioni
Metodi
Azioni



Attori/interlocutori
pub/priv multilivello





Municipalità di Genova: avvio lavori Genova@Resiliente



Smart week
Genova



250 partecipanti sessione del mattino



MARTEDÌ
20/11/2018

Ore 14.00 – 16.30

COSTRUIRE GENOVA@RESILIENTE

Tavoli tematici
Su invito

Asset GREY:

Sviluppo Innovativo delle Infrastrutture, reti e Comunicazioni

Asset GREEN:

Cambiamenti Climatici e Rigenerazione Urbana

Asset SOFT:

Impatti Economici, Community/Imprese

STRATEGIE PER LA CITTÀ RESILIENTE

Verso la città resiliente: strategie, asset e partnership



90 partecipanti sessione pomeridiana



Output previsti Genova@Resiliente

Documento di Sviluppo Innovativo Territoriale ambito economico/urbanistico.

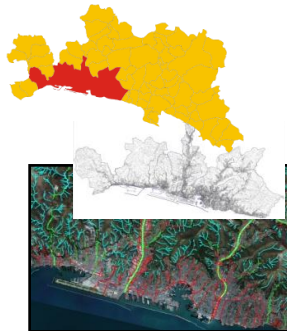
Dovrebbe contenere informazioni/indicazioni in proiezione futura su:

<p>Vulnerabilità locali - stato dell'arte</p> <p>Vulnerabilità potenziali</p> <p>declinate su asset Grey Green Soft</p>	<p>Individuazione priorità di intervento in coerenza con gli strumenti di pianificazione esistenti</p>	<p>Individuazione strumenti operativi da implementare</p> <p>misure contestualizzate</p>	<p>Individuazione metodo assegnazione indicatori di output, performance e risultato degli strumenti operativi</p>	<p>Individuazione tempistica di realizzazione strumenti operativi</p>
---	---	--	--	--

GREY

GREEN

SOFT

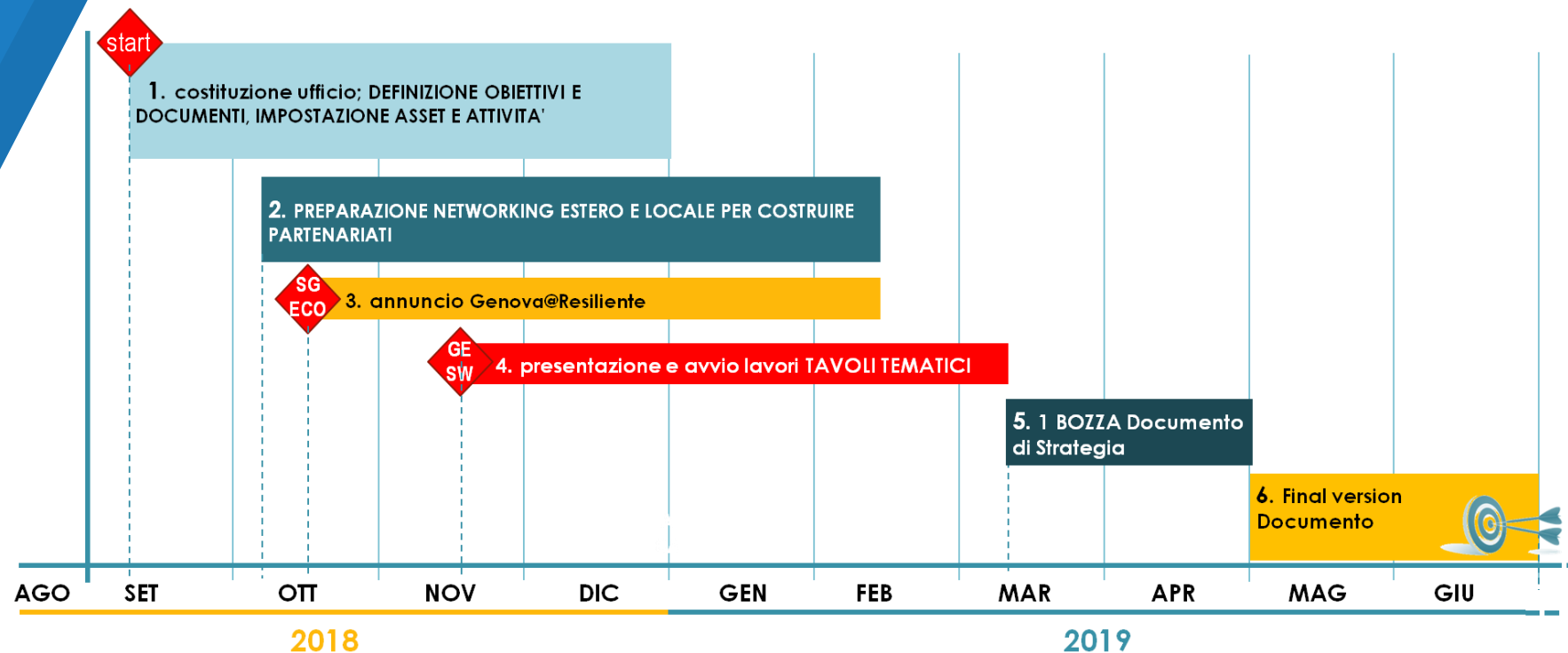


Area	Recommendations for the City of the BSR in order to improve its Resilience to the climate change
Grey	<p>Establish a specific program for the Operational Program and to improve the resilience of the grey infrastructure to the climate change. The recommendations are addressed to the Member States and the Operational Program.</p> <p>Establish a specific program for the Operational Program and to improve the resilience of the grey infrastructure to the climate change.</p>
Green	<p>Establish a specific program for the Operational Program and to improve the resilience of the green infrastructure to the climate change.</p> <p>Establish a specific program for the Operational Program and to improve the resilience of the green infrastructure to the climate change.</p>
Soft	<p>Establish a specific program for the Operational Program and to improve the resilience of the soft infrastructure to the climate change.</p> <p>Establish a specific program for the Operational Program and to improve the resilience of the soft infrastructure to the climate change.</p>





Municipalità di Genova: Tempistica





Collaborazioni e Relazioni

- Protocollo d'Intesa con le città di Milano e Torino - Task Force macroregionale di città resilienti
- Adesione alla Rete di Città Resilienti promossa dal dipartimento di Protezione Civile Nazionale
- prima città d'Europa ad attivare la collaborazione con il Joint Research Centre per implementare la nuova piattaforma, Risk Data Hub.



Grazie



ua-climateadaptation@ecorys.com
climadapt@comune.genova.it



www.urbanagendaforthe.eu



@EUUrbanAgenda