

Experiences of and potential cooperation with the Interregional Alliance for the Rhine-Alpine Corridor EGTC

ATELIER DI SCENARIO / ATELIER DE SCÉNARIO
Olbia, 14 giugno / juin 2018

Jörg SAALBACH, Director
Interregional Alliance for the Rhine-Alpine Corridor EGTC

Bottom-up!

- Our initiative started at local and regional level
- It was supported by an INTERREG IV B project: „CODE24“
- Result: Joint Strategy „One Corridor – One Strategy!“
- Preparation for establishment of EGTC during project
- Intention to continue succesful cooperation after end of project

THE RHINE-ALPINE CORRIDOR...

- connecting the North Sea and Mediterranean Sea
- 70 million inhabitants in the catchment area
(=13% of EU's population)
- 19% of EU's GDP generated
- 50 % of the north-south rail freight
- 1 billion tons of freight per year
- 1300 km long



Corridor Characteristics

- 5 countries
- 20 Rail-Road Terminals
- 13 urban nodes
- 22 inland ports
- 8 seaports
- 11 airports



EGTC Founding: 24 April 2015

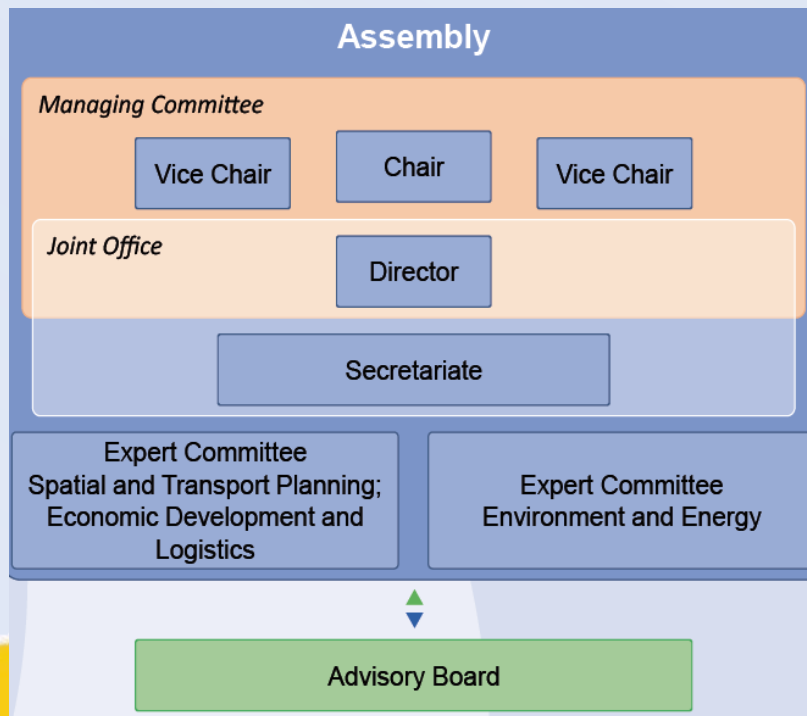


Members

- Havenbedrijf Rotterdam N.V.
- Provincie Gelderland
- Provincie Zuid-Holland
- Venlo
- Port of Antwerp
- Duisburger Hafen AG
- City of Mainz
- Region FrankfurtRheinMain
- Region Rhein-Neckar
- Stadt Mannheim
- Region Mittlerer Oberrhein
- TechnologyRegionKarlsruhe
- City of Karlsruhe
- Port autonome de Strasbourg
- City of Lahr
- Region Südlicher Oberrhein
- Canton Basel-Stadt
- Region Piemonte
- Region Liguria
- Region Lombardia
- Uniontrasporti, Milano



Organisation



Challenges for Cooperation

- Increase of traffic and transit tasks
- Urgent conflicts to be tackled incl. sustainability issues (noise, pollution, land use)
- Bottlenecks and capacity restrictions
- Cross-border issues and technical hurdles
- New capacities implemented (e.g. Gotthard tunnel)
- No joint strategy, no cooperation existing
- Regional/local level so far not directly involved in corridor development

Activities

- Combining and focusing the joint interests of its members towards national, European and infrastructure institutions
- Improving the visibility and promotion of the Corridor with its regions and cities
- Implementation and evolution of the joint development strategy
- Directing EU-funds to corridor related activities and projects
- Providing a central platform for mutual information and exchange between the members and external stakeholders

Projects

Approved:

- European Rail Freight Line System (CEF Transport 2014)
- RAISE-IT Rhine-Alpine Integrated and Seamless Travel Chain (CEF Transport 2015)
- VitalNodes (Horizon2020)

First evaluation

- 2 years after its foundation, the EGTC has proven to be a success
- Number of members raised from 10 to 21
- First EU-funded projects approved
- Member of Rhine-Alpine Corridor Forum
- EGTC a „door opener“
- Regional/local level visible and influential

Lessons learnt/Recommendations

- Decide on appropriate legal form for your intended cooperation
- Get a clear picture of objectives and aims of the EGTC
- Identify the potential members
- Establish a task force for preparing the EGTC
- Get in touch early with the respective national Approval Authorities
- Draft and discuss the mandatory Convention and Statutes asap
- Clarify all important issues between the future members

Critical Issues/Questions to be answered

- Organs of the EGTC?
- Legal seat of the EGTC?
- How will the EGTC be financed?
- What will be the amount of the annual fee?
- Who shall be in charge of the defined functions (Chairs, Director,...)?
- EGTC with or without limited liability?
- EGTC for a limited or an unlimited period

Cooperation with Sardinia/Corsica?

- Prolongation of official Rhine-Alpine Corridor?
- Connected through members Regione Liguria and Assoc. of Ligurian Ports
- Potential common issues to be defined
- Joint project(s)?
- Membership in our Advisory Board?

Thank you very much for your attention!

Contact:

Interregional Alliance for the
Rhine-Alpine Corridor EGTC

Jörg Saalbach, Director

c/o Verband Region Rhein-Neckar

M1, 4-5

68161 Mannheim/Germany

Phone +49 (0)- 621 10708-235

Fax +49 (0)- 621 10708-255

E-Mail joerg.saalbach@egtc-rhine-alpine.eu

Web egtc-rhine-alpine.eu